



CREATE
your STYLE™
with Swarovski®

www.RhinestoneSupply.com

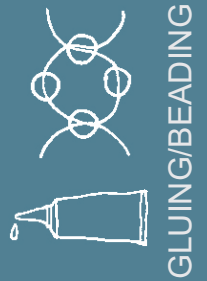
FLOATING JEWELS FROM THE BEACH

INTERWEAVE YOUR INSPIRATION WITH THE POETRY OF NATURE



INSTRUCTION
GUIDE


OCEAN TREASURES





Beading & gluing instruction OCEAN TREASURES – PENDANT SEASHELL



Components

- Beads Art. 5000 
- ø 3 mm
- Aquamarine
- Light Sapphire
- Light Azore
- ø 4 mm
- Light Sapphire
- ø 6 mm
- Light Azore
- ø 8 mm
- Aquamarine

- Beads Art. 5301 
- ø 6 mm
- Aquamarine
- Crystal

- Flat Backs Art. 2028 
- Crystal AB, SS12

Material

- Seashell
- Crimp Bead

STEP 1



STEP 2



STEP 3



OCEAN TREASURES



Beading instruction OCEAN TREASURES – PENDANT CRYSTAL STAR



Components

Beads
Art. 5000
ø 4 mm
Montana
ø 8 mm
Smoked Topaz



Beads
Art. 5301
ø 3 mm
Light Smoked Topaz



Fancy Stones
Art. 6721
ø 28 mm
Crystal



Material

Seashell

Crimp Bead

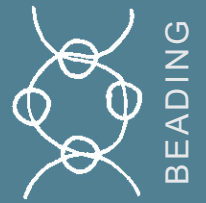
STEP 1



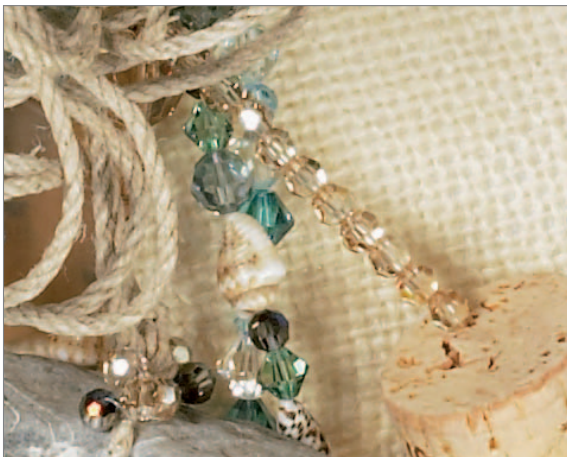
STEP 2



OCEAN TREASURES



Beading instruction OCEAN TREASURES – PENDANT CRYSTAL SHELL



Components

Beads
Art. 5000
ø 4 mm
Erenite AB
ø 6 mm
Light Sapphire
ø 8 mm
Black Diamond

Beads
Art. 5301
ø 4 mm
Erenite
ø 5 mm
Montana AB

Fancy Stones
Art. 6723
ø 28 mm
Crystal

Material

Seashell

Crimp Bead

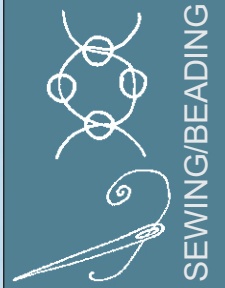
STEP 1



STEP 2



OCEAN TREASURES



Components

Beads
Art. 5000
ø 4 mm
Blue Zircon
Aquamarine
ø 6 mm
Blue Zircon
Pacific Opal



Beads
Art. 5301
ø 4 mm
Indicolite



Material

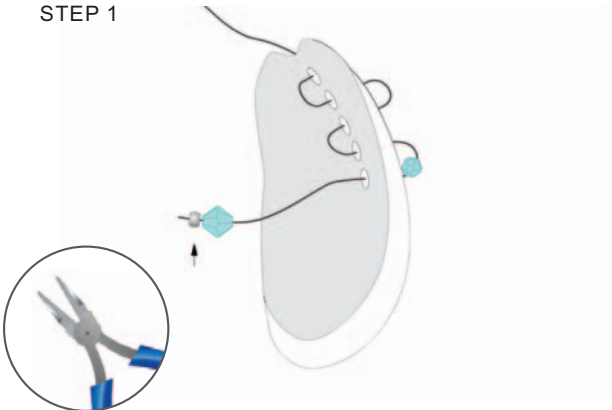
Shells

Crimp Bead

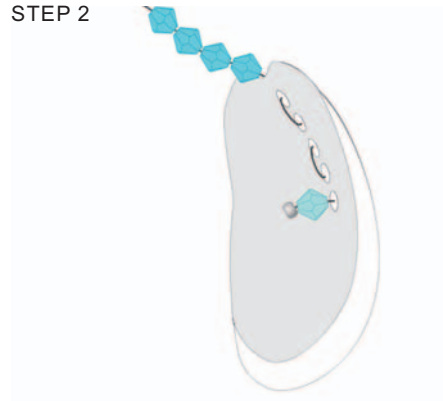
Beading & sewing instruction OCEAN TREASURES – PENDANT TWO SHELLS



STEP 1



STEP 2



STEP 3



OCEAN TREASURES



Components

Beads
Art. 5000
ø 4 mm
Golden Shadow
Metallic Blue



Material

Seashell

Pebble

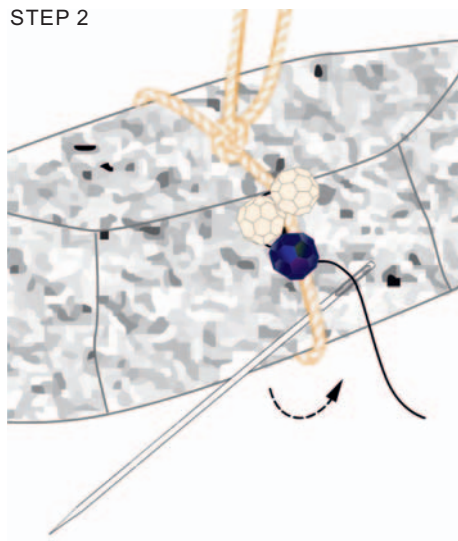
Sewing instruction OCEAN TREASURES – PENDANT PEBBLE



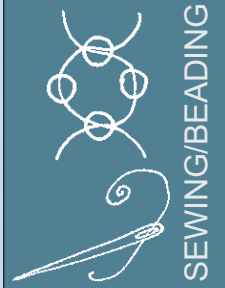
STEP 1



STEP 2



OCEAN TREASURES



SEWING/BEADING

Components

- Beads**
 Art. 5000
 ø 4 mm
 Metallic Blue
 Golden Shadow
 ø 6 mm
 Smoked Topaz
 Light Sapphire AB
 Black Diamond
 ø 8 mm
 Black Diamond
- Pendants**
 Art. 6010
 ø 11 mm
 Golden Shadow

Material

- Cork
 Crimp Beads

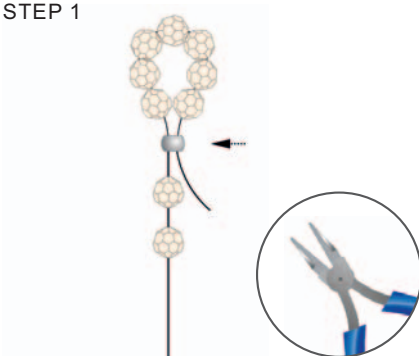
Beading & sewing instruction OCEAN TREASURES – PENDANT CORK



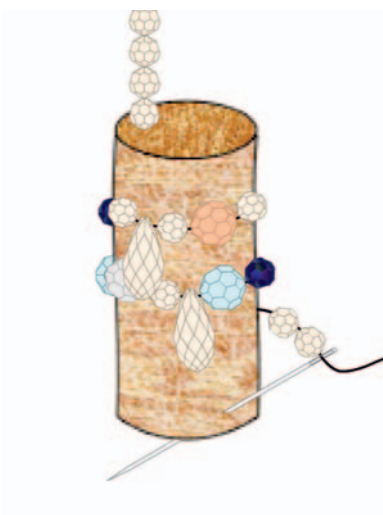
STEP 2



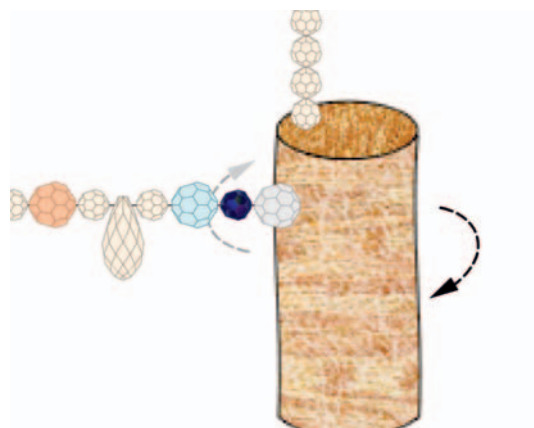
STEP 1



STEP 3



STEP 4



OCEAN TREASURES



Components

1
Sew-On Stones
Art. 3002
ø 14 mm
Crystal



2
Beads
Art. 5000
ø 4 mm
Light Sapphire



Material

1
Lobster claw

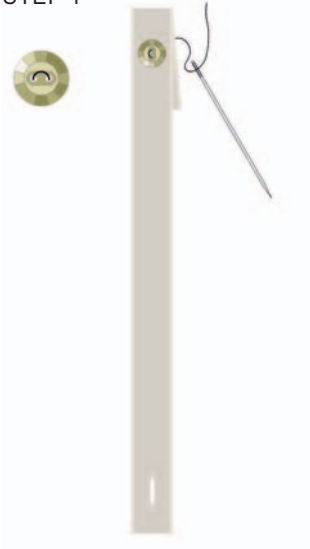
Textile strip

2
Button (Bone)
Crimp Bead

1 Sewing instruction OCEAN TREASURES – CRYSTAL BUTTON



STEP 1



STEP 2



2 Sewing instruction OCEAN TREASURES – CRYSTAL KNOT



STEP 1






OCEAN TREASURES



Sewing & gluing instruction OCEAN TREASURES – BROOCH



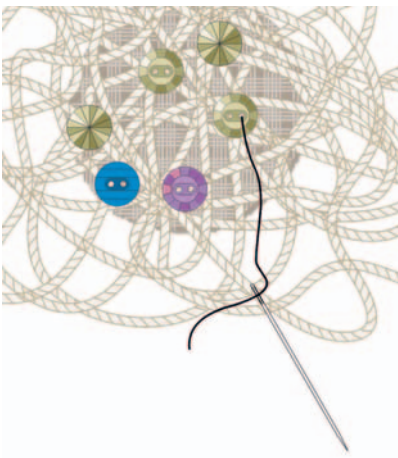
Components

- Sew-On Stones
Art. 3014
ø 14 mm
Volcano
Tabac 
- Sew-On Stones
Art. 3015
ø 14 mm
Meridian Blue M 
- Sew-On Stones
Art. 3016
ø 14 mm
Dorado
Metallic Blue 

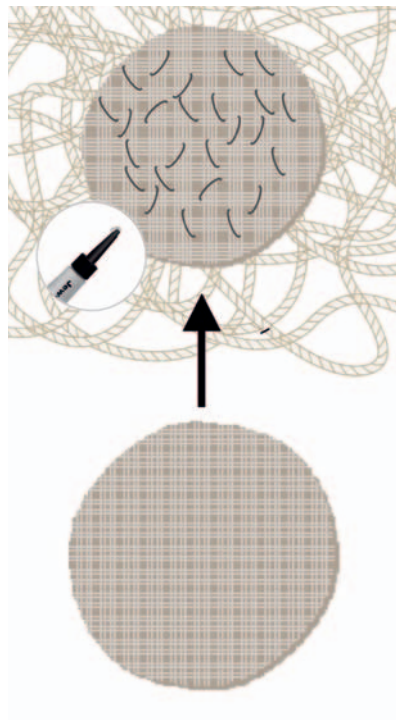
Material

- Brooch
- Cord, 2 m

STEP 1



STEP 2



STEP 3

